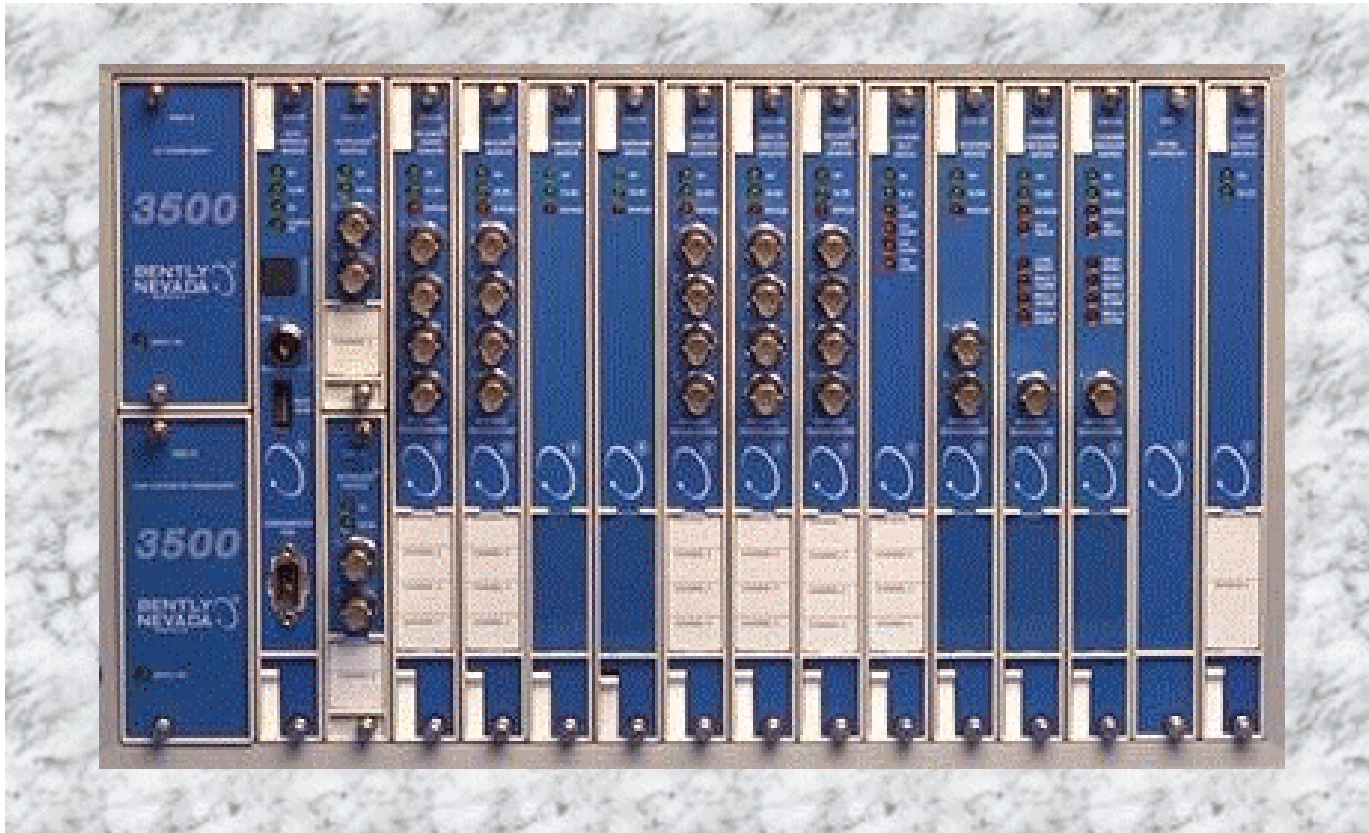


3500 监测系统



Rev K

Copyright © 2001 Bently Nevada.

All rights reserved.

The information contained in this training course is subject to change without notice.

**The following are trademarks of Bently Nevada
in the United States and other countries:**

Actionable InformationSM, Actionable Information to The Right People at the Right TimeSM, ADRE[®], Bently ALIGNTM, Bently BALANCETM, Bently DOCUVIEWTM, Bently LUBETM, Bently Nevada[®], Bently PERFORMANCETM, Because Better Machines Begin with Better BearingsSM, Because You Depend on Your MachinerySM, Because the Right Results Require the KnowledgeSM, CableLocTM, ClickLocTM, Data Manager[®] 2000, Decision SupportSM, DemoNetTM, Dynamic Data Manager[®], Dynamic TransmitterTM, Engineer AssistTM, FieldMonitorTM, FluidLoc[®], flexTIMTM, flexiTAMTM, Helping You Protect and Manage All Your Machinery[®], HydroVUTM, HydroViewTM, Key Ø[®], Keyphasor[®], Machine Condition ManagerTM 2000, Machine LibraryTM, Machine ManagerTM, MicroPROX[®], Move Data, Not People[®], Move Information, Not DataTM, NSvTM, PreformalignTM, Prime SpikeTM, RuleDeskTM, PROXPAC[®], Proximity[®], REBAM[®], SETM, Seismoprobe[®], ServoFluidTM, Smart Monitor[®], SnapshotTM, System 1TM, System ExtenderTM, TDXnetTM, TDIXconnXTM, TecknowledgyTM, TipLocTM, TorXimator[®], Transient Data Manager[®], Trendmaster[®], TrimLocTM, VAMTM, Velomitor[®], XlerometerTM

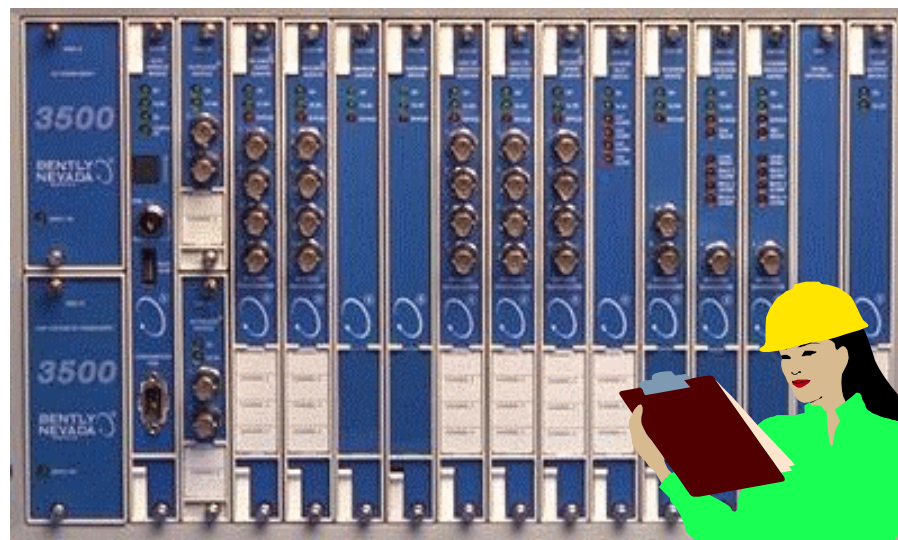
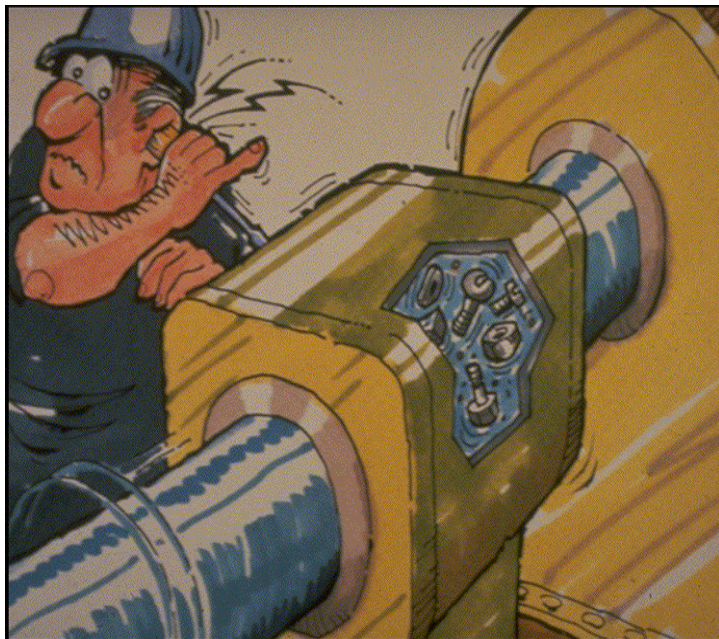
The Bently Nevada Orbit Design, Bently Balance and Design, System 1 Enabled and Design, and M-Squared and Design are all trademarks or registered trademarks of Bently Nevada in the United States and other countries.

3500 监测系统

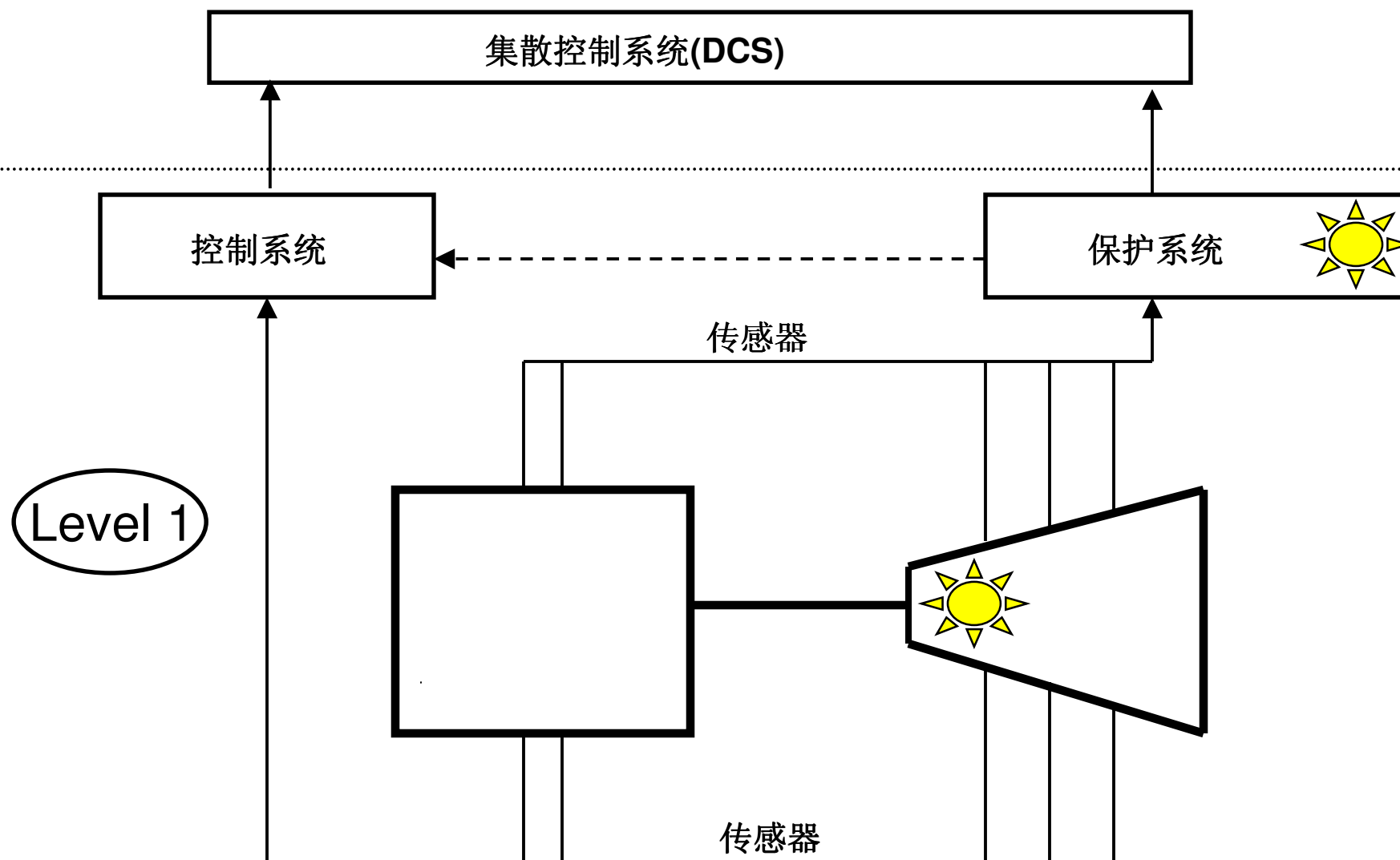
3500 是一个全方位的监测系统:

- 增加工厂的安全性
- 减少工厂运作成本
- 提高产品质量
- 最大化工厂的利用率

机器监测



机器保护



机器保护

Relay Association -

Available Monitors: Rack Type: Standard Config ID: Relay Slot: 3

2	3	4	5	6	7	8	9	10	11	12	13	14	15
25 FPH	3E REL	40 PRD	42 PRD	80 TDR									82 DCH
OK L/R	OK L/R	OK L/R	OK L/R	OK L/R									OK L/R
1 1	1 1	1 1	1 1	1 1									1 1
2 2	2 2	2 2	2 2	2 2									2 2
3 3	3 3	3 3	3 3	3 3									3 3
4 4	4 4	4 4	4 4	4 4									4 4

Available Monitor Channels/Alarms:

- S04C##A1 (Slot 4 Any Active Alert)
- S04C##A2 (Slot 4 Any Active Danger)
- S04C01A1 (Slot 4 Channel 1 Alert)
- S04C01A2 (Slot 4 Channel 1 Danger)
- S04C02A1 (Slot 4 Channel 2 Alert)
- S04C02A2 (Slot 4 Channel 2 Danger)
- S04C03A1 (Slot 4 Channel 3 Alert)
- S04C03A2 (Slot 4 Channel 3 Danger)
- S04C04A1 (Slot 4 Channel 4 Alert)
- S04C04A2 (Slot 4 Channel 4 Danger)**

And (*) Or (+) Enter <---

{ } CLR

Alarm Drive Logic:

S04C01A2 * S04C02A2 * S04C03A2 * S04C04A2

Standard Relay Association

Channel 1

☒ Active

☐ Latching Relays

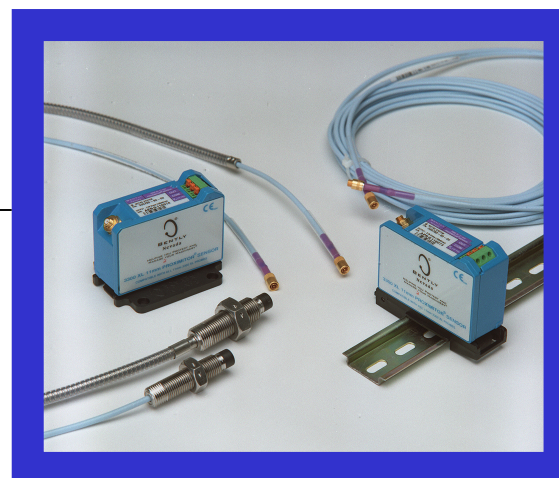
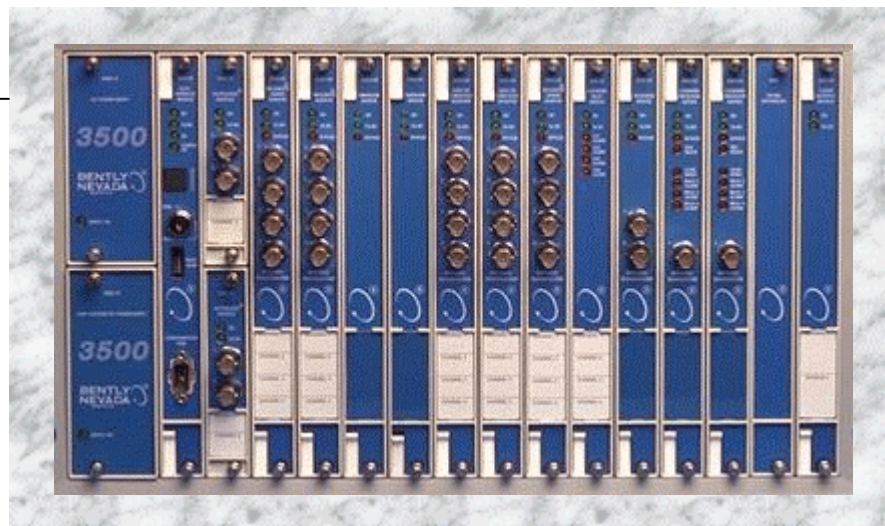
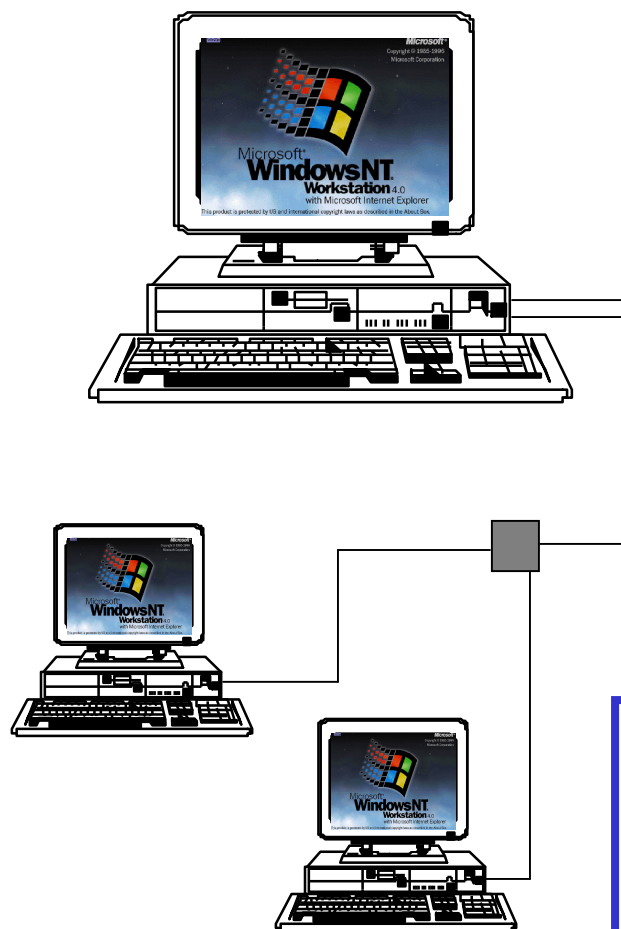
And Voting Setup...

Relay NE/NDE Switch Status:
Normally De-Energized

OK Point Names Cancel Print Form Help BENTLY NEVADA®

如果四个通道均指示“Danger”
就触发继电器

监测系统的特点



监测器组态

Radial Vibration

Channel: **2** (Active) Slot: **2** Rack Type: **Standard**

Enable

	Full-scale Range	Clamp Value
Direct	0-10 mil pp	0.00
Gap	-24 Vdc	0.0
<input type="checkbox"/> 1X Ampl	0-10 mil pp	0.00
1X Phase Lag		0
<input type="checkbox"/> 2X Ampl	0-10 mil pp	0.00
2X Phase Lag		0
<input type="checkbox"/> Not 1X Ampl	0-10 mil pp	0.00
<input type="checkbox"/> Smax Ampl	0-10 mil	0.00

Recorder Output ☐ Two mA Clamp
None

Delay ☐ 100 ms
Alert **3** 1 - 60 s
Danger **1.0** 1.0 - 60.0 s

Transducer Direction
☒ Toward Probe
☐ Away From Probe

Zero Position (Gap) **0.00** Volts
Adjust...

Trip Multiply **1.00** 1.00 to 3.00 (steps of 0.25)

Direct Frequency Response **240 - 240,000** cpm

Transducer Selection
Type **3300-8mm Proximito** Customize...
I/O Module Attached - Jumper Position:
N/A

Alarm Mode
Alert
☒ Latching
☐ Nonlatching
Danger
☒ Latching
☐ Nonlatching

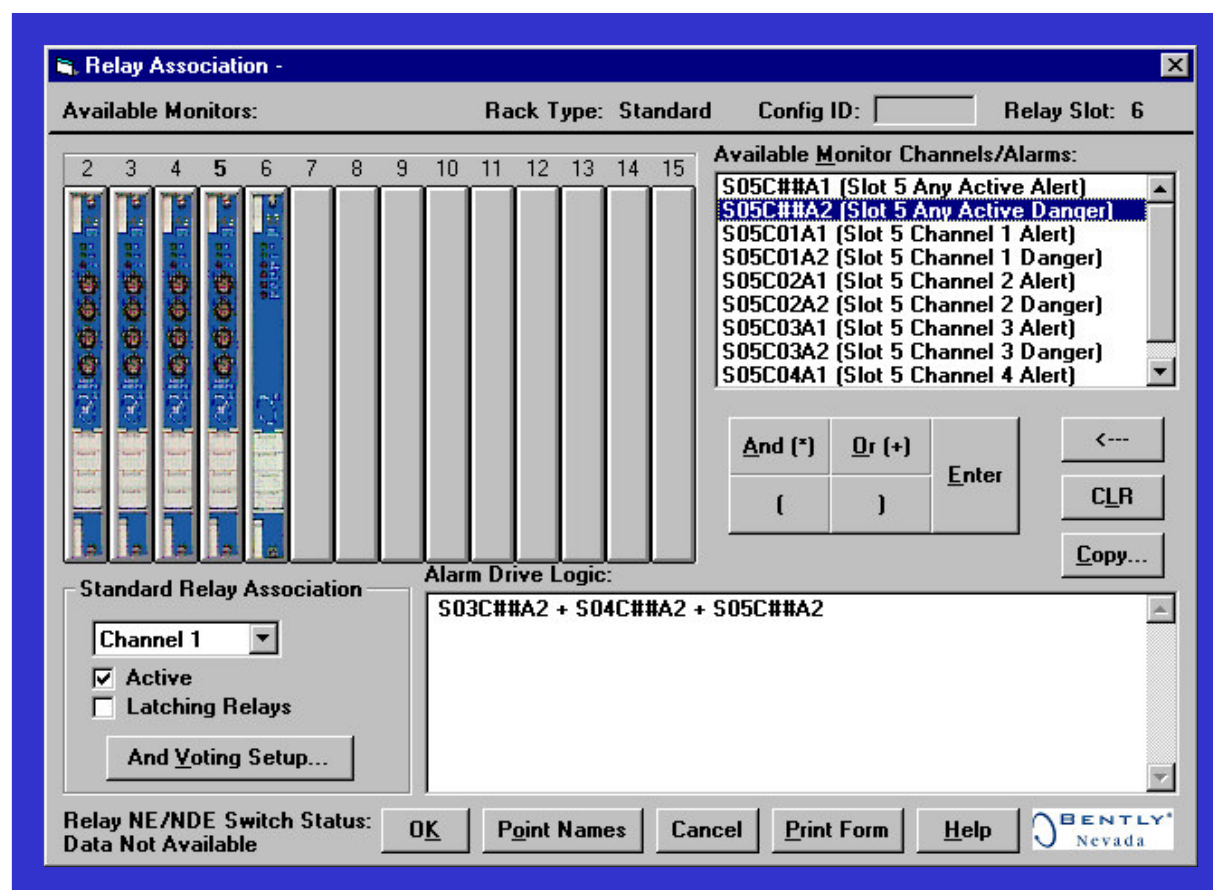
Transducer Orientation
90 Degrees
☒ Left
☐ Right

Barriers
☒ None ☐ Internal
☐ MTL 796(-) Zener Ext.
☐ Galvanic Isolator

OK Set Defaults Cancel CP Mod Print Form Help

BENTLY Nevada

继电器组态

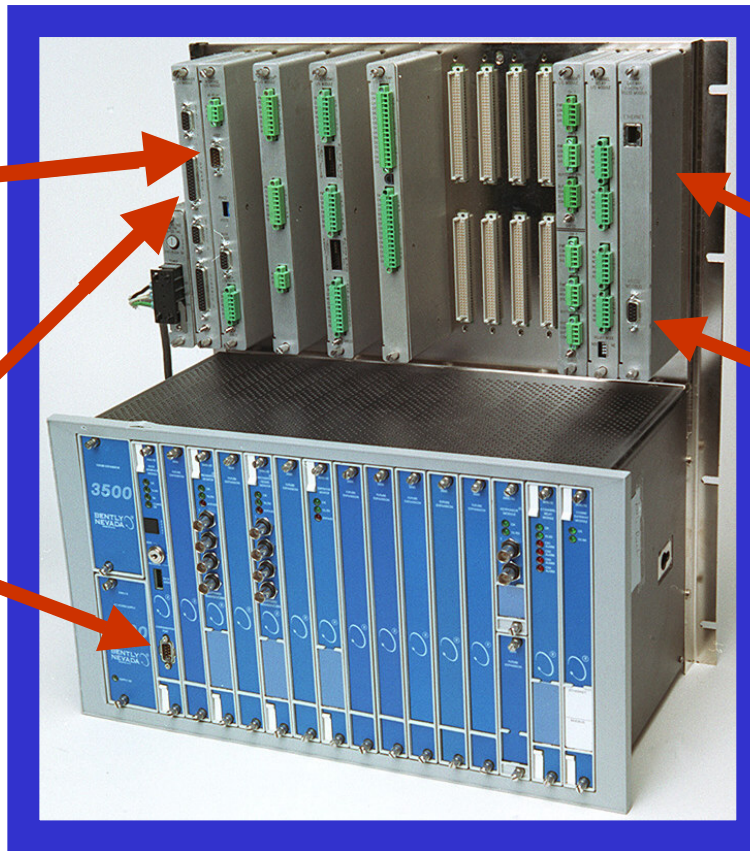


3500 监测系统通讯

RS-232/422
Connectivity

Data Manager
Connectivity

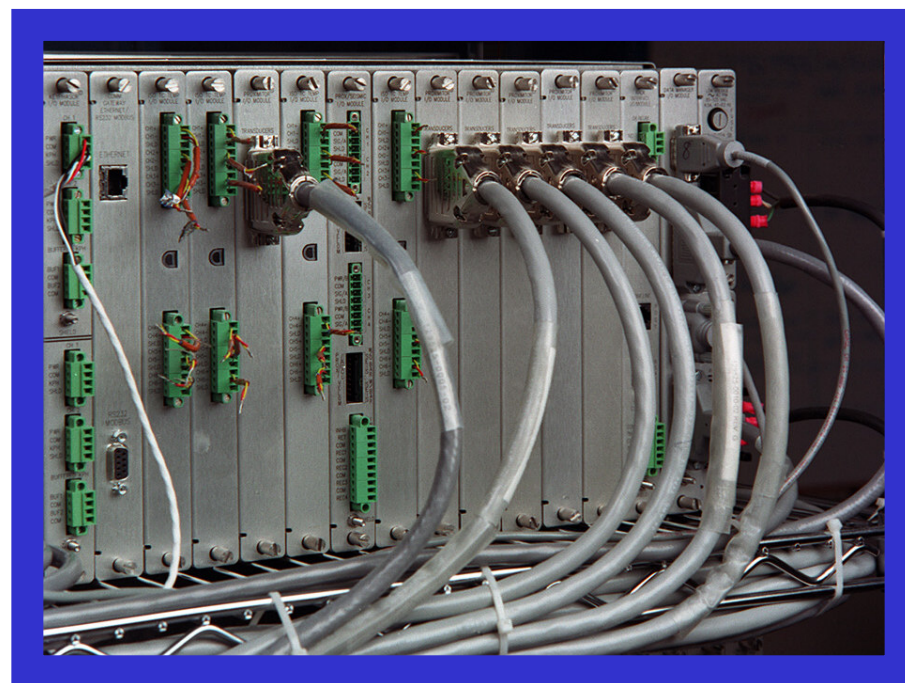
RS-232
Connectivity



Network Connectivity
3500, Modbus,
OPC with /91

Modbus
Connectivity

内部和外部端子



冗余的电源工作



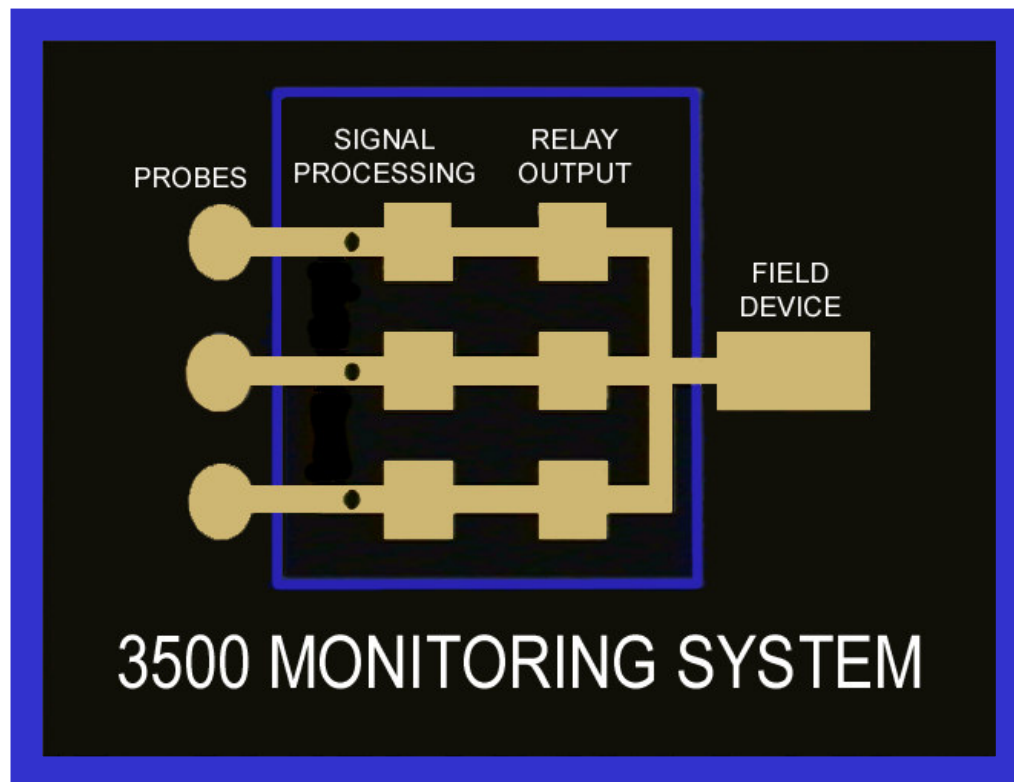
“热插拔”监测器

冗余系统

三重冗余系统



超速保护
系统



计算机数据接入

Data Acquisition
Computer



Plant Wide Ethernet



Plant
Manager



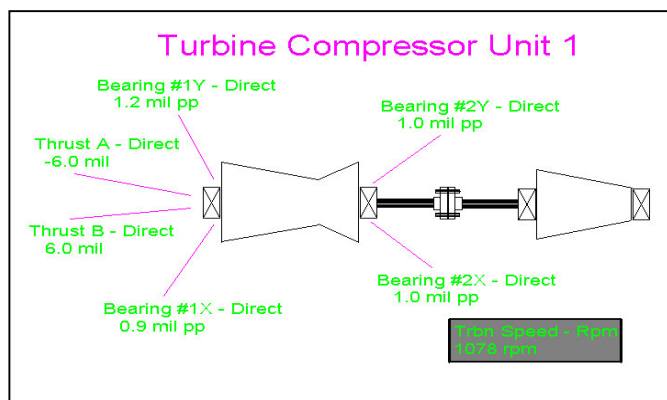
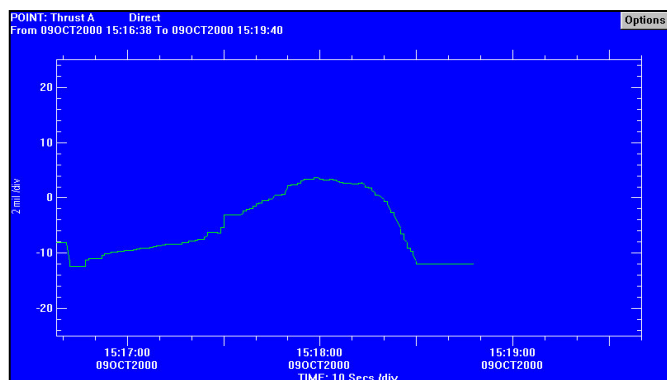
Maintenance
Manager



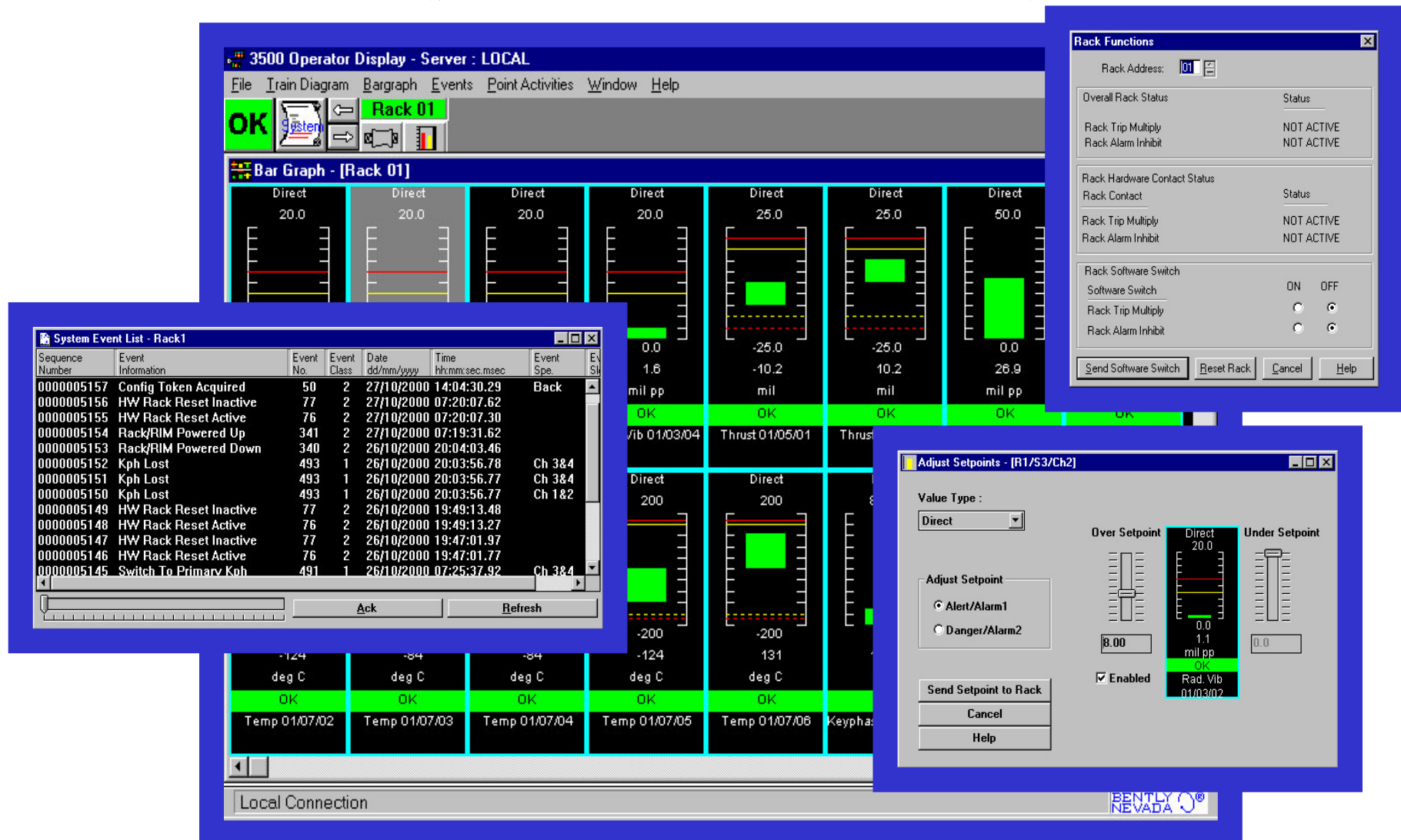
Machinery
Specialist

<---Display Computers

计算机显示范例



模块接入和控制



复习

- 机器管理组件
- 3500系统规则
- 监测系统设计目标
- 独立的检测器特点
- 计算机数据接入特点
- 数据显示和传输

复习

- 接线和组态特点
- 冗余的支持特点
- 报警和操作特点
- 特殊的扩展
- 通讯特点

3500 监测系统

